



Rockford Lutheran School

*The provider of an exceptional college preparatory
education in a challenging and inspiring Christian environment.*

Igniting Minds and Souls

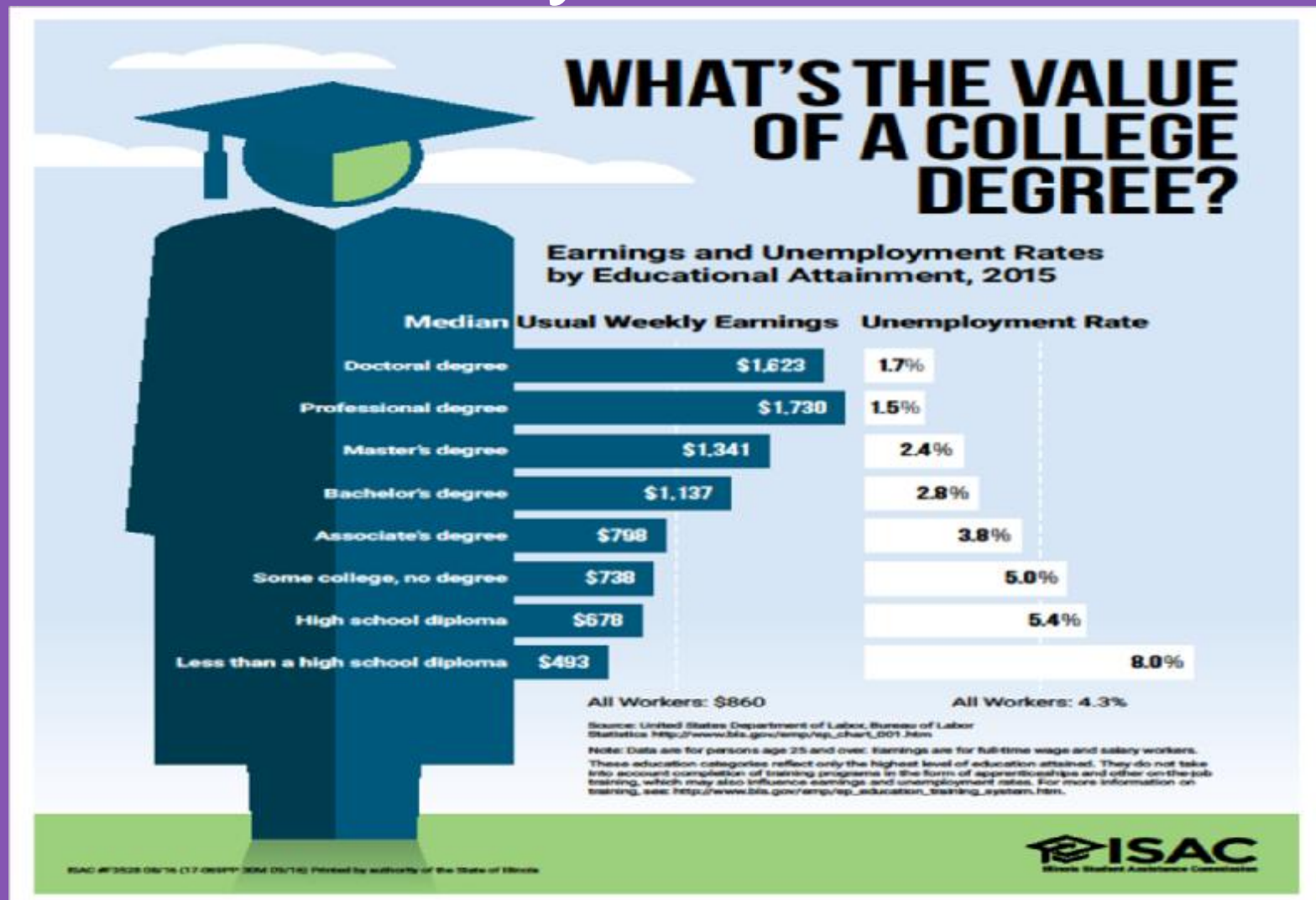


Senior College Night-Topics

- Why College?
- 2 year vs. 4 year
- Graduation Rates
- What are colleges looking for?
- Financial Aid
- Resources



Education Pays





What are colleges looking for?

1. Graduates.
2. Grade point average (G.P.A.)
3. What classes did you take?
4. Standardized test scores
5. What did you do outside the classroom? (Polish your resume)



Pros and Cons of a 2 year School

SOURCE: Scholarships.com

Pros

- **Cost of Tuition**
- **Flexible Schedule**
- **Transitional**
- **Varied Programs**

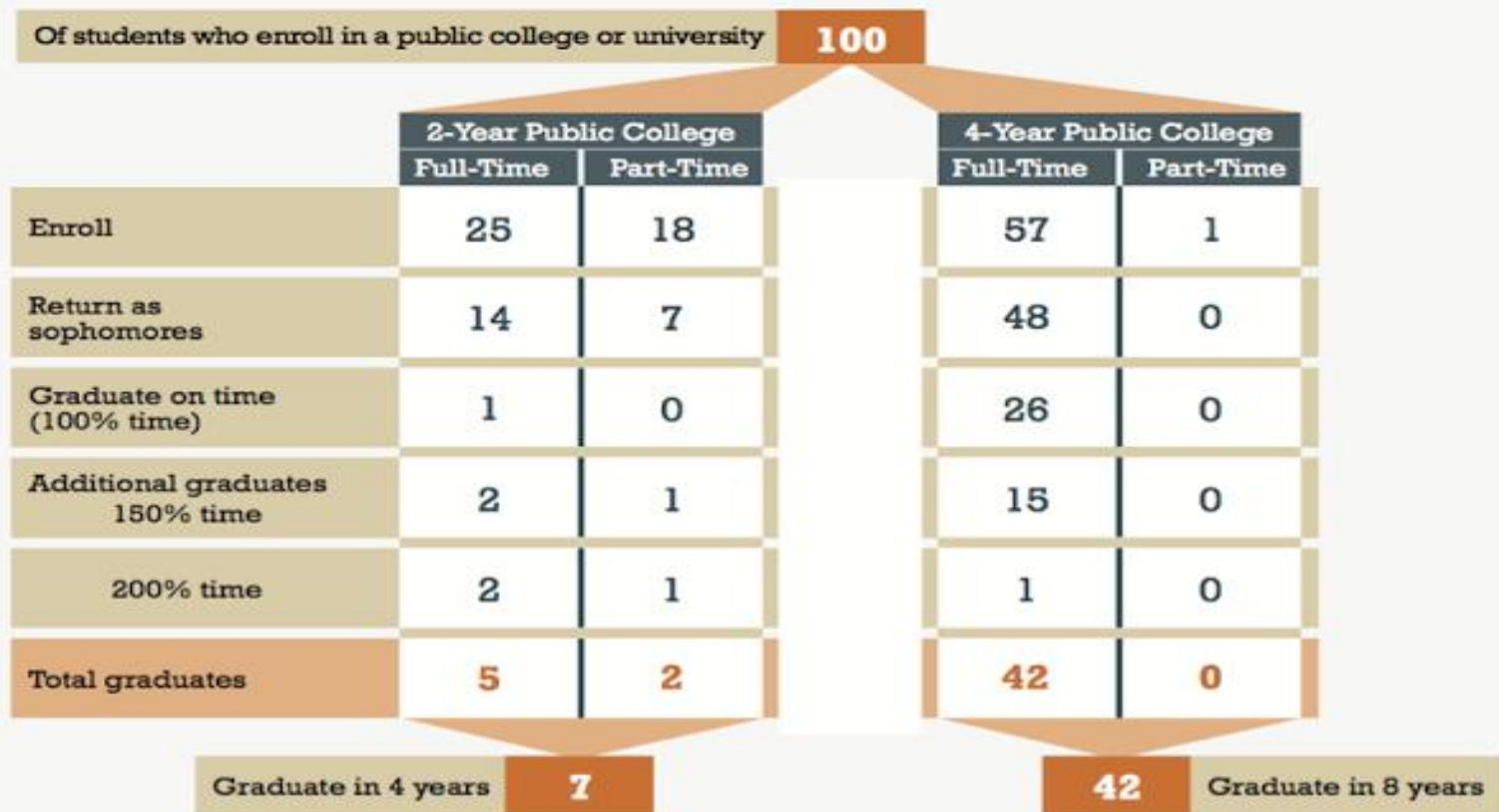
Cons

- **Limited Curriculum**
- **Lighter Workload**
- **Uninvolved Students**
- **Campus life (or lack thereof)**



Too few make it on time...

Too few students make it through college.



Key to measuring time

	Associate	Bachelor's
100% time	2 years	4 years
150% time	3 years	6 years
200% time	4 years	8 years



College Visits

- Start Now (Applications should go in now)
- Take an (un)official tour
- Talk to whoever does the teaching
- Talk to students
- See the facilities where you will spend your time
- Speak to Financial Aid people (Need blind?)
- Research program details-
Placement/Acceptance Rates
- Be ok with distance-it alone is transformational



What to look for

- Culture of the campus
- Campus size and location
- Affordability
- Chances of being accepted
- Personality of the school
- Majors offered



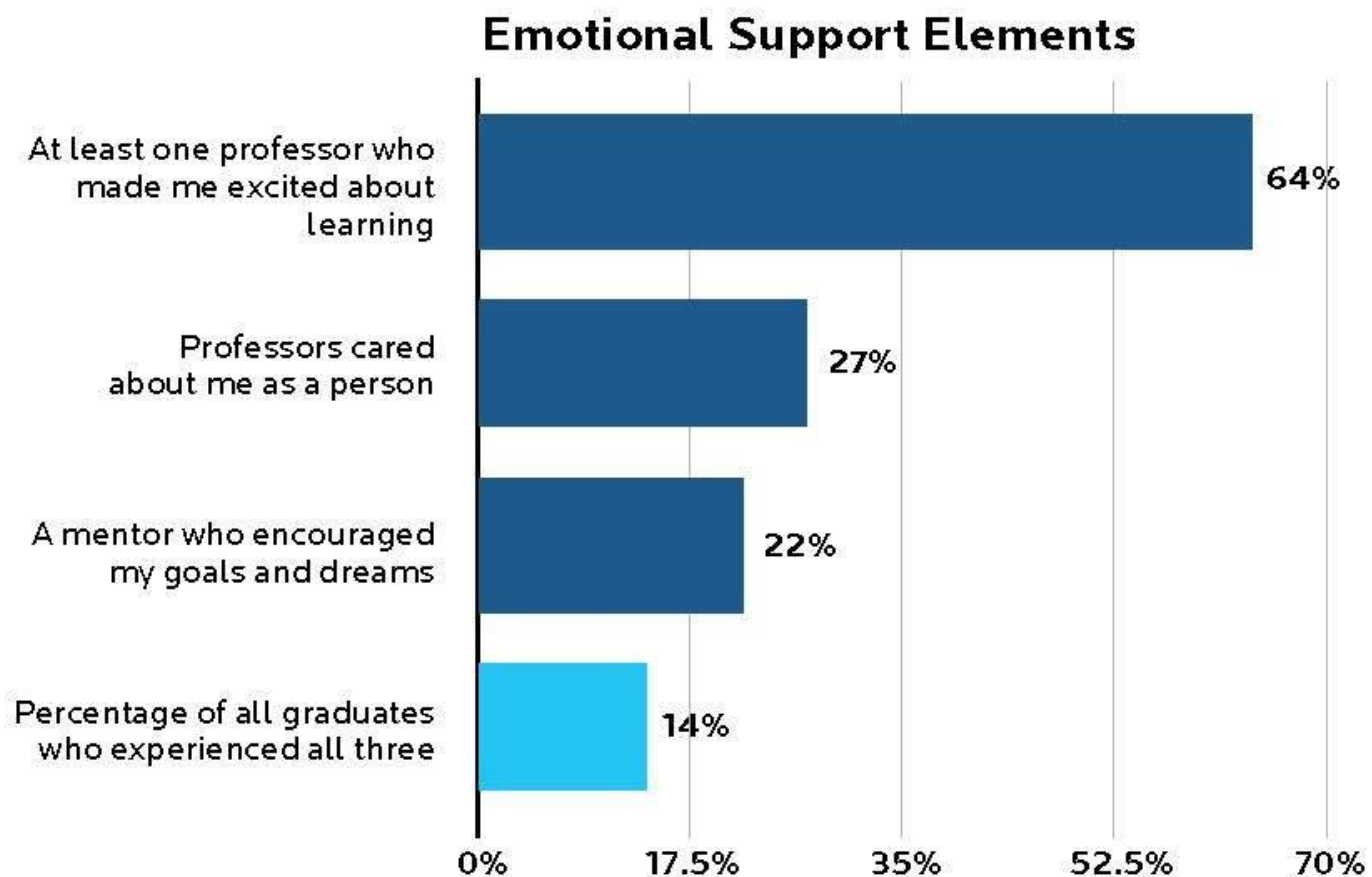
Five Essential Elements of Well-Being: What Does a "Great Life" Look Like? (Gallup)

- **Purpose:** How you occupy your time; liking what you do each day
- **Social:** Relationships and love in your life
- **Financial:** Managing your economic life to reduce stress and increase security
- **Community:** Engagement and involvement in the area where you live
- **Physical Well-Being:** Good health and enough energy to get things done daily

The REAL Data Revolution, By Brandon Busted, July/August, 2016
<https://www.agb.org/trusteeship/2016/julyaugust/the-real-data-revolution>
Association of Governing Boards of Universities and Colleges

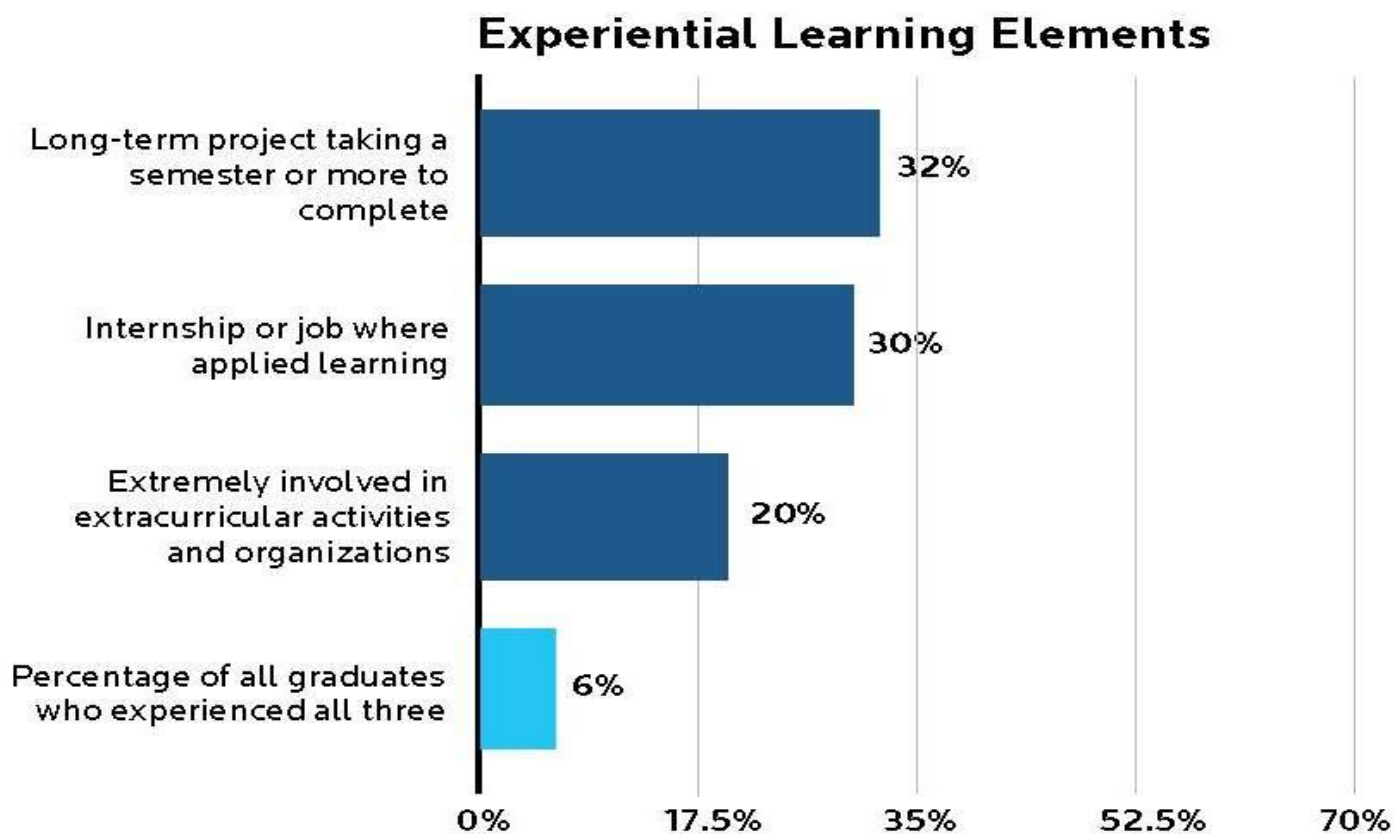


Gallup-Purdue index of six key indicators: Emotional Support Elements





Gallup-Purdue index of six key indicators: Experiential Learning Elements





School Culture-It will change you.

- View the comparison study of alumni from Lutheran Universities and flagship public universities conducted by the Lutheran Educational Conference of North America.
www.lutherancolleges.org
- Consider the intangible benefits you considered for your student when you choose Rockford Lutheran.
- Weigh the importance of all aspects of the collegiate experience, not just the name recognition on the diploma.



A college experience is not a commodity.

- A commodity is a marketable item used to satisfy wants and needs. Your students' college educations should be transforming, not transactional. Seek college professors who will engage and challenge students as they seek to discern their vocations and, at the same time, make a difference in the world in which we live.



A great college rests on its faculty

- A recent survey of our graduates reveals that:
- 86% of Lutheran college alumni felt faculty members were interested in students personally as well as academically. (vs 44% for flagship university alumni)
- 67% had conversations with professors outside of class. (vs 34% for flagship university alumni)
- 70% of Lutheran college alumni had a professor who was a mentor in college. (vs 48% for flagship university alumni)



Resumes

- RÉSUMÉ: Submit your résumé with this form to your teacher. Be specific and thorough. The information you include in your résumé will be used by your teacher *to personalize and enhance your recommendation.*
- Your résumé should include the following:
 - HEADING
 - NAME (*as you want the college or scholarship committee to know you*)
 - GRADUATION DATE
 - ACADEMICS
 - HIGH SCHOOL ACTIVITIES...*could include but not limited to:*
 - COMMUNITY ACTIVITIES...*could include but not limited to:*
 - CHURCH ACTIVITIES...*could include but not limited to:*
 - WORK EXPERIENCE



Early Decision/Early Action

- **Early decision versus early action**
- Early decision plans are binding — a student who is accepted as an ED applicant must attend the college. Early action plans are nonbinding — students receive an early response to their application but do not have to commit to the college until the normal reply date of May 1.
- Approximately 450 colleges have early decision or early action plans, and some have both.
- **ED applicants**
- Apply early (usually in November) to first-choice college.
- Receive an admission decision from the college well in advance of the usual notification date (usually by December).
- Agree to attend the college if accepted and offered a financial aid package that is considered adequate by the family.
- Apply to only one college early decision.
- Apply to other colleges under regular admission plans.
- Withdraw all other applications if accepted by ED.
- Send a nonrefundable deposit well in advance of May 1.



Senior Timeline:

- Fall Semester:
 - Finish the college selection
 - Retake ACT/SAT if applicable
 - Submit ED/EA Applications by 10/14
 - Submit RD Applications by Thanksgiving (before?)
 - Scholarship Applications
 - FAFSA – now opens on 10/1
- Spring Semester
 - Scholarship Applications
 - Make college choice by April-latest.



Application Process-School Side

- Sending transcripts
- School profile
- Counselor recommendation form
 - Secondary school report form
 - Mid-year report form
- Final transcripts



Application Process-Student Side

- Online applications
- Make sure your files are complete
 - recommendations
 - essay
 - fee
 - sending ACT scores
- FERPA



College Essay

- Did you answer the prompt?
- Does the answer to the prompt show insight into your character, who you really are?
- Does it sound like a 17 year-old wrote it?
- Engage the reader, be original!
- Be genuine!
- Don't repeat all your activities
- Show, don't tell
 - Choose a specific instance from your life that you can use to describe yourself and what you have learned.
- Proofread, proofread, proofread!
- Get several pairs of eyes for editing

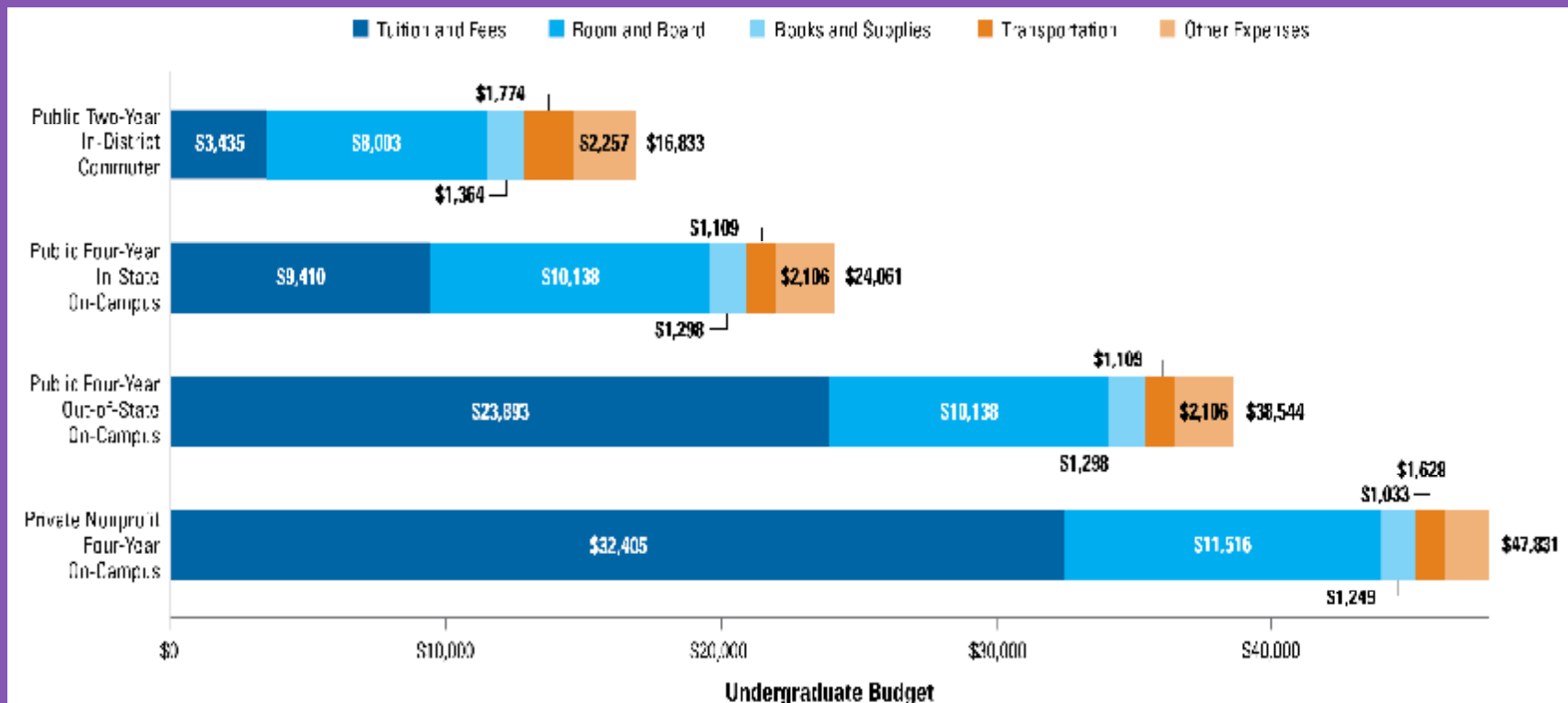


Other College Ap hints:

- <https://www.collegeessayguy.com/>
- Supplemental Essays
- DOs and DON'Ts for Your "Why Us?" Statement
- Common App
- How to Write Your Common App Activities List
- A Brief Guide to Using the Common App "Additional Information" Section



Average Estimated Full-Time Undergraduate Budgets by Sector, 2015-16 (Enrollment-Weighted)



SOURCE: The College Board, *Trends in College Pricing 2014*, Figure 1



FAFSA





You can start filling out the FAFSA on October 1

- Fafsa.gov
- Studentaid.ed.gov
- Draft registration: sss.gov
- EFC - Expected Family Contribution
- SAR - Student Aid Report



Two Types of Scholarships

NEED BASED

- This category of scholarships is available to help students who don't have the finances available to attend college.

MERIT BASED

- These awards are based on a student's academic, artistic, athletic or other abilities, and often factor in an applicant's extracurricular activities and community service record.



Free Money

Scholarships

- 3% of all financial aid comes from private scholarships.
- 97% comes from the school

Grants

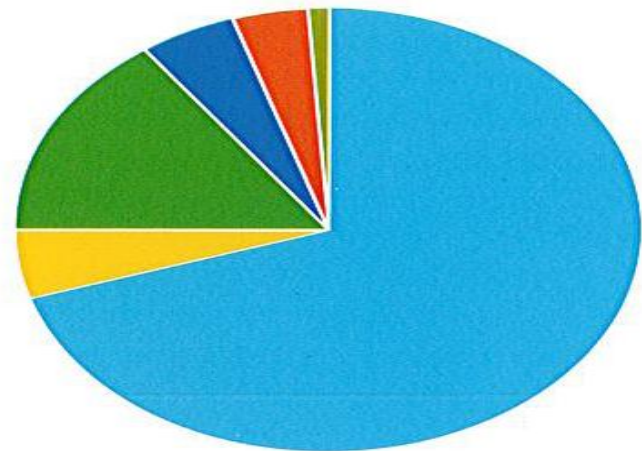
- Federal Grants
- Pell Grants- is money the federal government provides for students financial need, who have not earned their first bachelor's degree or who are not enrolled in certain post-baccalaureate programs.
- State Grants

TYPES OF FINANCIAL ASSISTANCE

Augustana students qualify for many different types of financial assistance including state, federal, private and institutional (awarded by Augustana).

Types of financial assistance received by incoming first-year students (2010-11)

Augustana Grants & Scholarships	70%
College Work Study	5%
Student Loans	15%
State Grants	5%
Federal Grants	4%
Private Scholarships & Grants	1%



RANGE OF FINANCIAL ASSISTANCE

The chart below is based on the 2010-11 incoming class and indicates the range of financial assistance for which students may qualify, based on their families' income range. (Note: awards will vary based on a number of factors, including academic performance, family size, number of children in college and student/parent assets.)

Range of financial assistance received by incoming first-year students (2010-11)



Transcripts

- Mrs. Woolbright handles all transcripts
 1. Request transcripts on line-Parchment
 2. Official transcripts require a 1 week lead time.
- Most transcripts are now being sent electronically through Parchment or other online providers.



Resources

- Ilcis.intocareers.org
- Collegeboard.org/quickstart
- Bigfuture.collegeboard.org
- Fastweb.com
- Mymajors.com
- Gocollege.com
- Cfnil.org/scholarships
- Fafsa.gov
- ACT.org (Students register)



How Do We Stay Connected for College Planning and Scholarships?

- Visit our webpage: Counselor's Corner
- <http://rockfordlutheran.org/academics/counselor-s-corner>
- Visit our Facebook page: Rockford Lutheran Guidance Dept.
- <https://www.facebook.com/rlsguidance/>



How Do We Stay Connected for College Planning and Scholarships?

- Remind.com (Class of 2018)
- Text to: 81010 Message: @purple2018
- or
- <https://www.rmd.at/purple2018>

- Illinois Career Information System (Including ACT Test Prep)
- <https://ilcis.intocareers.org/materials/portal/home.html>
- Login: firstname.lastname
- Password: RIhs2018