



# *Rockford Lutheran School*

*The provider of an exceptional college preparatory  
education in a challenging and inspiring Christian environment.*

*Igniting Minds and Souls*

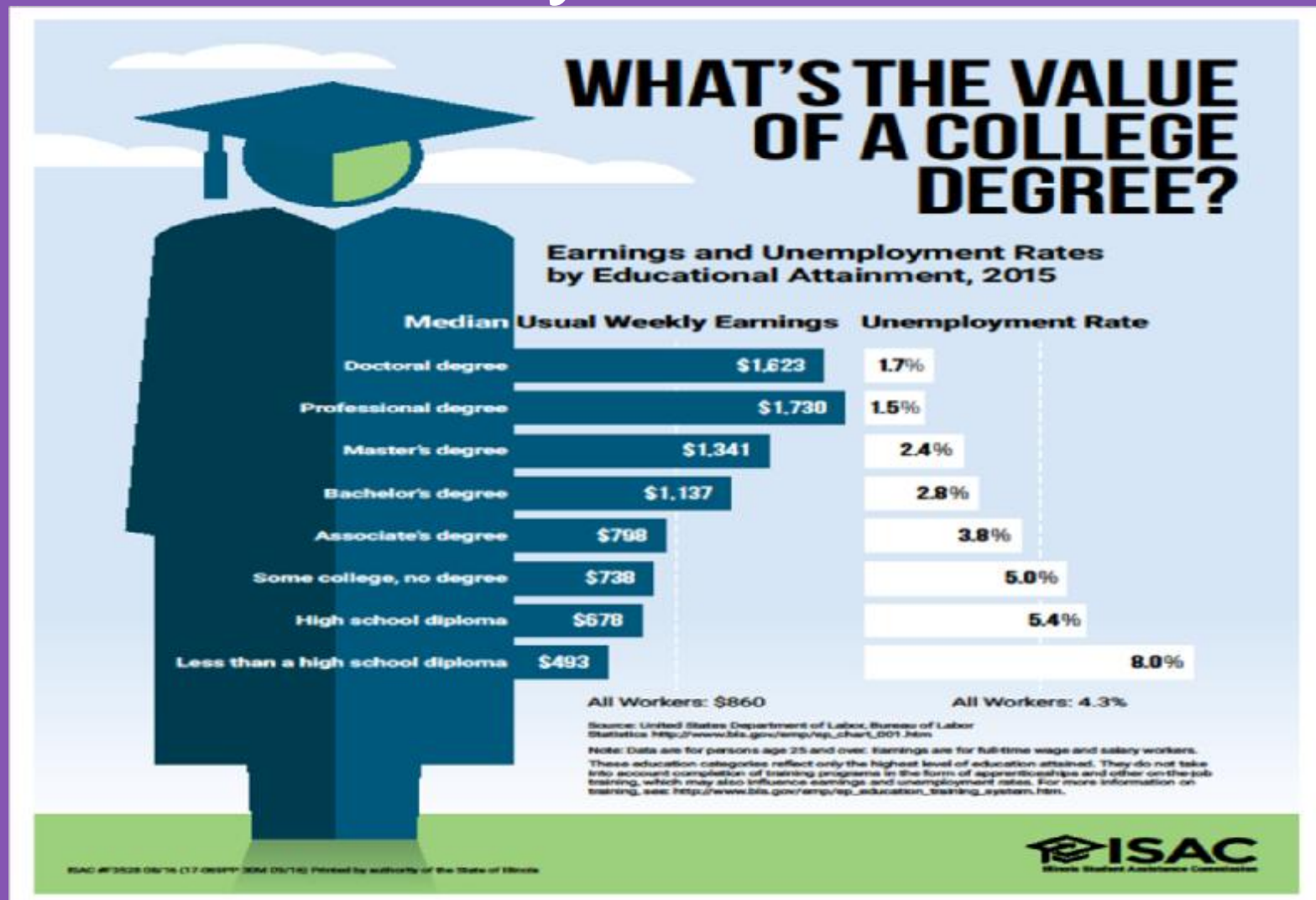


# Minority College Night-Topics

- Why College?
- 2 year vs. 4 year
- Graduation Rates
- What are colleges looking for?
- Financial Aid
- Resources



# Education Pays





# What are colleges looking for?

1. Graduates.
2. Grade point average (G.P.A.)
3. What classes did you take?
4. Standardized test scores
5. What did you do outside the classroom? (Polish your resume)



# Pros and Cons of a 2 year School

SOURCE: Scholarships.com

## Pros

- **Cost of Tuition**
- **Flexible Schedule**
- **Transitional**

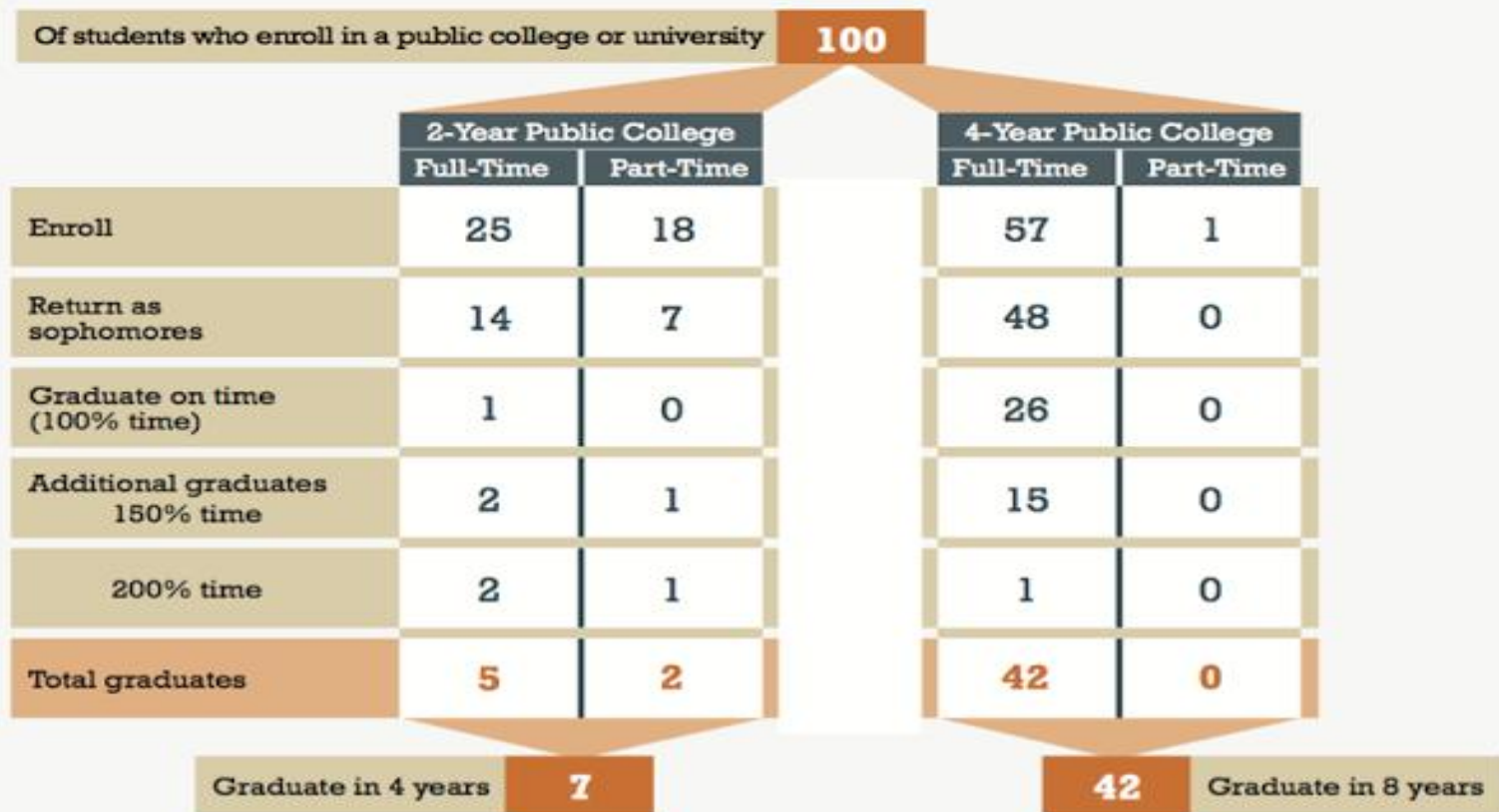
## Cons

- **Limited Curriculum**
- **Lighter Workload**
- **Uninvolved Students**
- **Campus life (or lack thereof)**



# Too few make it on time...

**Too few students make it through college.**



Key to measuring time

	Associate	Bachelor's
100% time	2 years	4 years
150% time	3 years	6 years
200% time	4 years	8 years



# College Visits

- Start Now (Applications should go in now)
- Take an (un)official tour
- Talk to whoever does the teaching
- Talk to students
- See the facilities where you will spend your time
- Speak to Financial Aid people (Need blind?)
- Research program details-  
Placement/Acceptance Rates
- Be ok with distance-it alone is transformational



# What to look for

- Culture of the campus
- Campus size and location
- Affordability
- Chances of being accepted
- Personality of the school
- Majors offered





## School Culture-It will change you.

- View the comparison study of alumni from Lutheran Universities and flagship public universities conducted by the Lutheran Educational Conference of North America.  
[www.lutherancolleges.org](http://www.lutherancolleges.org)
- Consider the intangible benefits you considered for your student when you choose Rockford Lutheran.
- Weigh the importance of all aspects of the collegiate experience, not just the name recognition on the diploma.



# Resumes

- RÉSUMÉ: Submit your résumé with this form to your teacher. Be specific and thorough. The information you include in your résumé will be used by your teacher *to personalize and enhance your recommendation.*
- Your résumé should include the following:
- HEADING
  - NAME (*as you want the college or scholarship committee to know you*)
  - GRADUATION DATE
- ACADEMICS
- HIGH SCHOOL ACTIVITIES...*could include but not limited to:*
- COMMUNITY ACTIVITIES...*could include but not limited to:*
- CHURCH ACTIVITIES...*could include but not limited to:*
- WORK EXPERIENCE



# Senior Timeline:

- Fall Semester:
  - Finish the college selection
  - Retake ACT/SAT if applicable
  - Submit Applications by Thanksgiving
  - Scholarship Applications
  - FAFSA – now opens on 10/1
- Spring Semester
  - Scholarship Applications
  - Make college choice by April-latest.



## Application Process-School Side

- Sending transcripts
- School profile
- Counselor recommendation form

Secondary school report form

Mid-year report form

- Final transcripts



## Application Process-Student Side

- Online applications
- Make sure your files are complete
  - recommendations
  - essay
  - fee
  - sending ACT scores
- FERPA

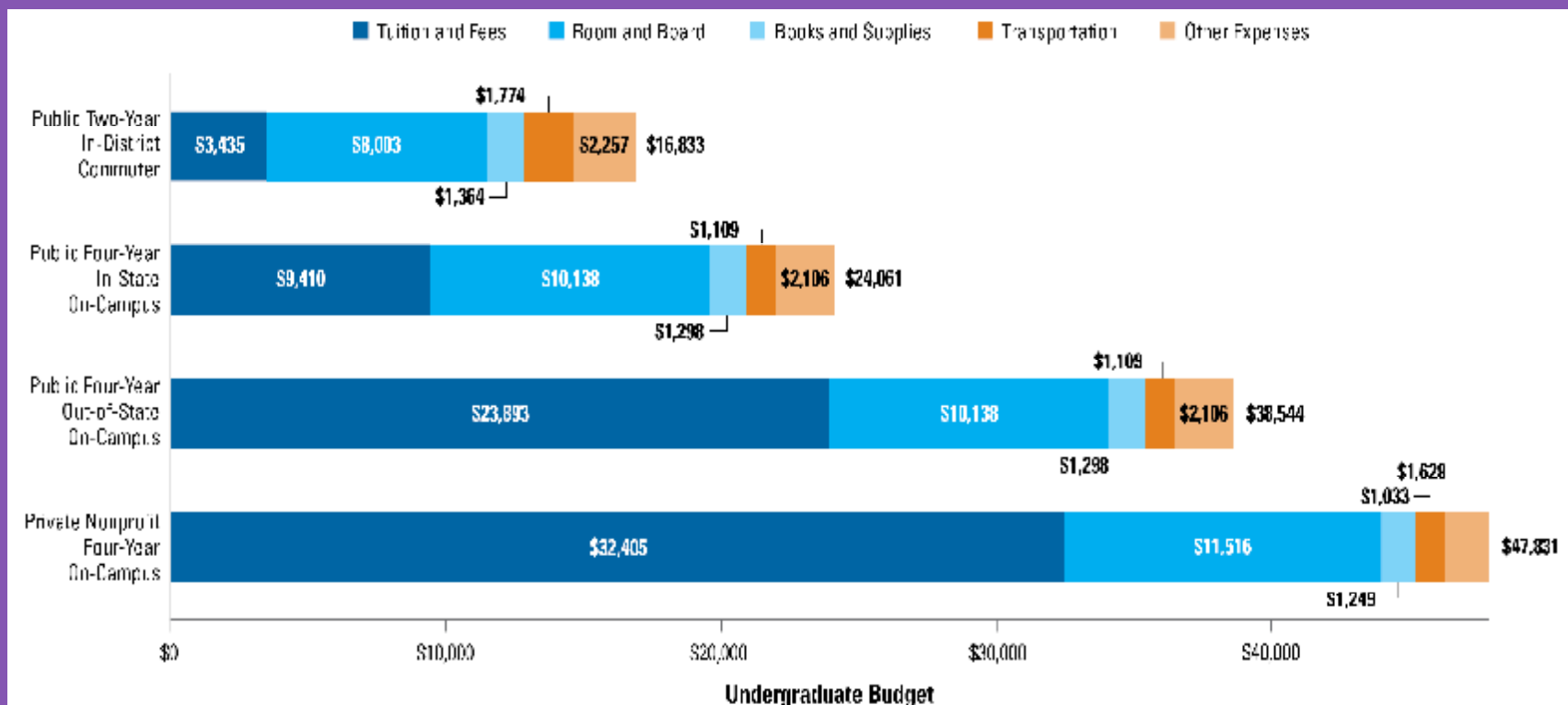


# College Essay

- Did you answer the prompt?
- Does the answer to the prompt show insight into your character, who you really are?
- Does it sound like a 17 year-old wrote it?
- Engage the reader, be original!
- Be genuine!
- Don't repeat all your activities
- Show, don't tell
  - Choose a specific instance from your life that you can use to describe yourself and what you have learned.
- Proofread, proofread, proofread!
- Get several pairs of eyes for editing



# Average Estimated Full-Time Undergraduate Budgets by Sector, 2015-16 (Enrollment-Weighted)



SOURCE: The College Board, *Trends in College Pricing 2014*, Figure 1



FAFSA







## You can start filling out the FAFSA on October 1

- [Fafsa.gov](http://Fafsa.gov)
- [Studentaid.ed.gov](http://Studentaid.ed.gov)
- Draft registration: [sss.gov](http://sss.gov)
- EFC - Expected Family Contribution
- SAR - Student Aid Report



# Two Types of Scholarships

## **NEED BASED**

- This category of scholarships is available to help students who don't have the finances available to attend college.

## **MERIT BASED**

- These awards are based on a student's academic, artistic, athletic or other abilities, and often factor in an applicant's extracurricular activities and community service record.



# Free Money

## Scholarships

- 3% of all financial aid comes from private scholarships.
- 97% comes from the school

## Grants

- Federal Grants
- Pell Grants- is money the federal government provides for students financial need, who have not earned their first bachelor's degree or who are not enrolled in certain post-baccalaureate programs.
- State Grants



## How much state, school, and private scholarship money can I get?

Depends on the program; do your research!

- Our state aid: Illinois MAP grants have been up to about \$4700. Only for use at Illinois Schools.
- Ask college financial aid offices for info about aid available at their schools
- Free scholarship search at
- [Studentaid.gov/scholarships](http://Studentaid.gov/scholarships)



## How much federal student aid can I get?

Maximum amounts for the major programs for a dependent freshman in 2017-18:

- Federal Pell Grant: \$5,920
- Federal Work-Study: depends on funds available at school
- Direct Subsidized and Unsubsidized Loans: \$5,500 total
- Direct PLUS Loan (for parents): COA minus other aid received

Funds from other programs are available; see [StudentAid.gov/needmoney](http://StudentAid.gov/needmoney) for details.



## Web sites for scholarships:

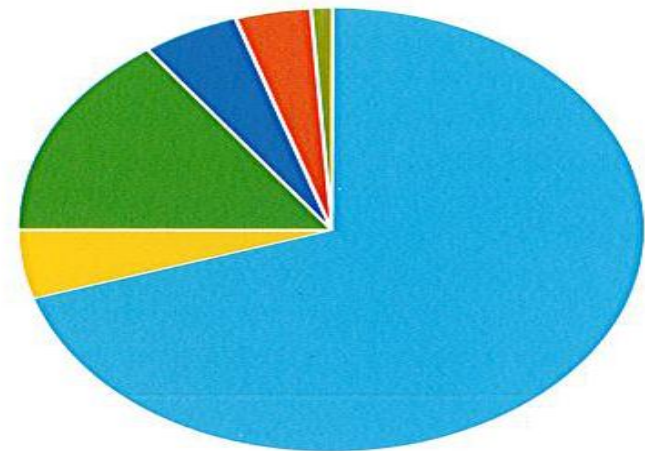
- [www.Blackexcel.org/200-Scholarships.html](http://www.Blackexcel.org/200-Scholarships.html)
- [Staff.lib.msu.edu/harris23/grants/3specpop.htm](http://Staff.lib.msu.edu/harris23/grants/3specpop.htm)
- [Cfnil.org/Scholarships](http://Cfnil.org/Scholarships)
- Delta Sigma Theta Sorority. Contact Tiffani Weatherly at 815-408-0378
- [Ramm-rkfd.org](http://Ramm-rkfd.org)
- [Hsf.net](http://Hsf.net) (Hispanic Scholarship Fund)
- [Uncf.org](http://Uncf.org) (African-American Scholarship Fund)

## TYPES OF FINANCIAL ASSISTANCE

Augustana students qualify for many different types of financial assistance including state, federal, private and institutional (awarded by Augustana).

### Types of financial assistance received by incoming first-year students (2010-11)

Augustana Grants & Scholarships	70%
College Work Study	5%
Student Loans	15%
State Grants	5%
Federal Grants	4%
Private Scholarships & Grants	1%



## RANGE OF FINANCIAL ASSISTANCE

The chart below is based on the 2010-11 incoming class and indicates the range of financial assistance for which students may qualify, based on their families' income range. (Note: awards will vary based on a number of factors, including academic performance, family size, number of children in college and student/parent assets.)

### Range of financial assistance received by incoming first-year students (2010-11)



# Louis Stokes Alliance for Minority Participation-ISU

- Funded by the National Science Foundation, LS-AMP is a support program for minority students majoring in Biology, Chemistry, Computer Science, Math, or any other STEM program.
- It offers a variety of support programs and services, but it really offers an opportunity to join a community of supportive peers, mentors, staff and faculty who will help you reach your short term and long term goals in the STEM fields.
- Please feel free to contact us with your concerns or any questions you might have about LS-AMP by calling Christa Platt at (309) 438-3714.





## Minority Teachers of Illinois (WTI)

- The Minority Teachers of Illinois Scholarship Program is available to minority students enrolled in a teacher education program. *Please note that the number of scholarships made through this program, as well as the individual dollar amount awarded, are subject to sufficient annual appropriations by the Illinois General Assembly and the Governor.*
- **Benefits**
- MTI awards can be used for tuition, fees, room and board or commuter charges (but cannot exceed Cost of Attendance when combined with other aid) - eligible students may receive an award up to \$5,000 per year.



# Minority Student Orientation-WIU

- The purpose of Minority Student Orientation is to give incoming students of color the opportunity to obtain additional assistance in their transition from home to Western and the Macomb community; meet various staff, faculty, administrators, students, and organization leaders at Western Illinois University; obtain information on various departments and services; and get an early start on becoming familiar with the campus. Students and their families will get tips on being successful inside and outside the classroom and will get answers to questions about Western and the Macomb community. This is a great opportunity to meet other incoming freshman students of color.



# Concordia-Chicago receives National Science Foundation grant to increase diversity in STEM programs

- The National Science Foundation has awarded \$117,516 to Concordia University Chicago as part of the Louis Stokes Alliances for Minority Participation (LSAMP) program, which assists universities and colleges in increasing the numbers of students in high-quality degree programs in science, technology, engineering and mathematics (STEM) in order to diversify the STEM workforce.



# Luther College

- Diversity Center
- The Diversity Center is a resource that activates, develops, and enhances diversity consciousness and intercultural competence with the goal of making the campus climate more inclusive for everyone.
- The Diversity Center staff:
  - Assists students, faculty, and staff to effectively manage diversity challenges
  - Collaborates with other departments and groups to provide education and entertainment
  - Serves as academic advisors



Concordia College-Selma  
[www.ccal.edu](http://www.ccal.edu)



# Resources

- [Ilcis.intocareers.org](http://Ilcis.intocareers.org)
- [Collegegreenlight.com](http://Collegegreenlight.com)
- [Collegeboard.org/quickstart](http://Collegeboard.org/quickstart)
- [Bigfuture.collegeboard.org](http://Bigfuture.collegeboard.org)
- [Fastweb.com](http://Fastweb.com)
- [Mymajors.com](http://Mymajors.com)
- [Gocollege.com](http://Gocollege.com)
- [Cfnil.org/scholarships](http://Cfnil.org/scholarships)
- [Fafsa.gov](http://Fafsa.gov)
- [ACT.org](http://ACT.org) (Students register)



# How Do We Stay Connected for College Planning and Scholarships?

- Visit our webpage: Counselor's Corner
- <http://rockfordlutheran.org/academics/counselor-s-corner>
- Visit our Facebook page: Rockford Lutheran Guidance Dept.
- <https://www.facebook.com/rlsguidance/>



# How Do We Stay Connected for College Planning and Scholarships?

- Remind.com (Class of 2018)
- Text to: 81010    Message: @purple2018
- or
- <https://www.rmd.at/purple2018>
  
- Illinois Career Information System (Including ACT Test Prep)
- <https://ilcis.intocareers.org/materials/portal/home.html>
- Login: firstname.lastname
- Password: RIhs2018